



Family Photography

Becky Holdstock - Olivejoy Photography

The importance of family photos

- ◆ Photographs preserve time and memories
- ◆ Photographs are heirlooms
- ◆ Good photos boost confidence

Taking photos of families

- ◆ Capturing memories
- ◆ Capturing personalities & family dynamics
- ◆ Capturing honest emotions
- ◆ Capturing real life moments

Taking photos of children

- ◆ Be spontaneous
- ◆ Be creative
- ◆ Be fun and relaxed
- ◆ Allow them to be themselves

(Do's) & Don'ts

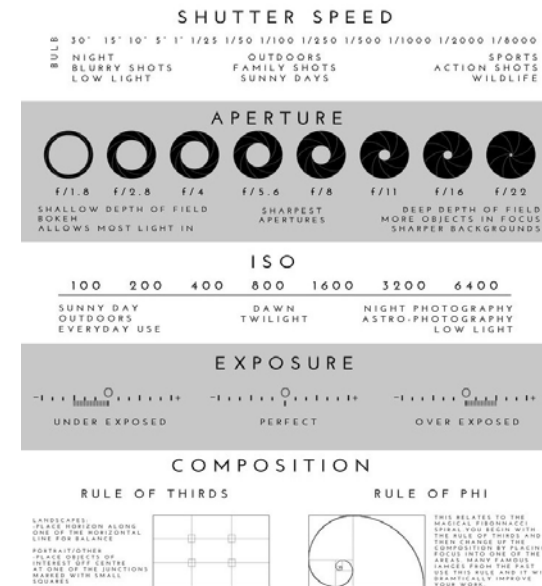
- ◆ DO look for opportunities to take photos
- ◆ DO be brave and experiment with your camera
- ◆ DO find a style that suits you
- ◆ DO have fun
- ◆ DO get in the photos too

Do's & (Don'ts)

- ◆ DON'T worry if you don't see great results at first
- ◆ DON'T be afraid to tell people what to do
- ◆ DON'T put people in a box
- ◆ DON'T be too hard on yourself

Practicalities

- ◆ Natural light
 - avoid direct/harsh light and shadows
 - sunshine isn't always a good thing
 - experiment with angles
- ◆ Camera functions
 - focusing - aim to focus on a person's eyes
 - lower aperture creates depth/emotion
 - ISO - high ISO can cause grainy skin tones
 - shutter speed - capture those milliseconds moments
- ◆ Editing
 - lightroom/photoshop can beautifully enhance photos
 - post processing and editing can bring life to an average photo



Newborn Henry



- ♦ Three days old, had siblings, mum wanted a posed and natural photos
- ♦ Canon 6D, 35mm lens/50mm lens, ISO 500, f1.2-2.5, 1/400-1/600

Newborn Henry



- ♦ Calm, patience & flexibility

Newborn Henry



Jack's Family



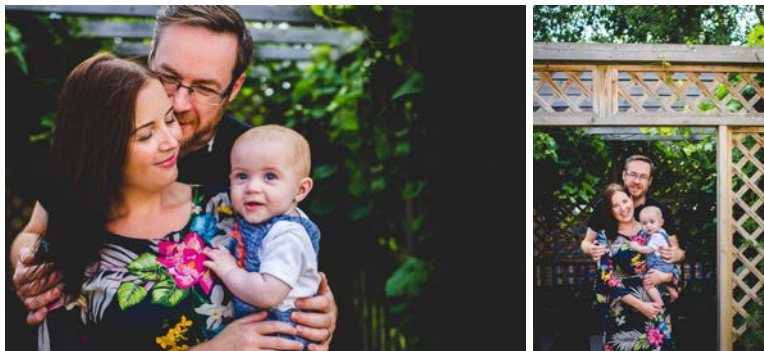
- ♦ 6 months old, just started sitting up, family likes to have updated photos every few months
- ♦ Canon 6D, 35mm lens/50mm lens, ISO 200, f2.8, 1/640

Jack's Family

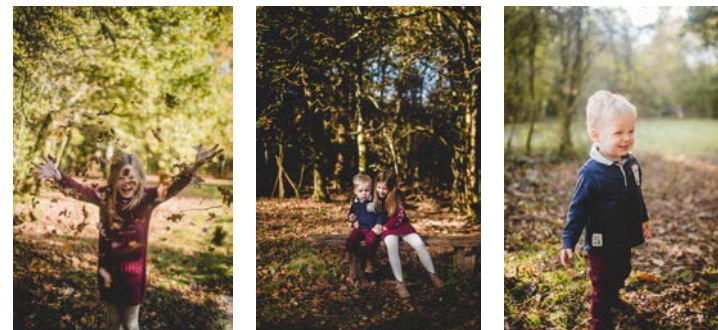


- ♦ Dad camera shy, using angles to create different dynamics

Jack's Family



Autumn Family

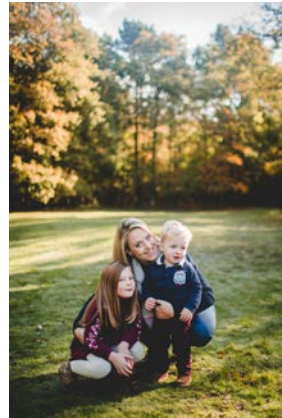


- ♦ Bright sunshine, sleepy + shy toddler, autumn colours
- ♦ Canon 6D, 35mm lens/50mm lens, ISO 640, f1.4, 1/2000-1/4000

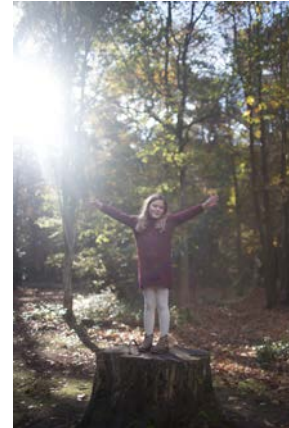
Autumn Family



♦ Finding ways to use the natural light and shadows



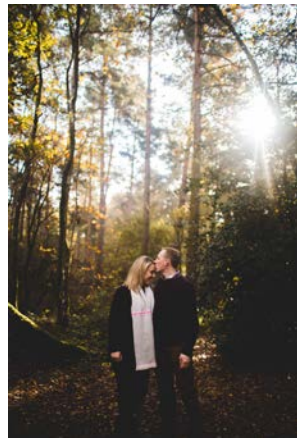
Autumn Family



Before
&
After



Autumn Family



Sisters



- ♦ Large family, ages 2-21, learning disability
- ♦ Canon 6D, 35mm lens/50mm, ISO 320, f3.5, 1/80 - 1/125

Sisters



Relating on different levels with individuals
Trust, patience, fun



Generations



- ♦ 4 generations of family, once in a lifetime opportunity, one of my earlier photoshoots
- ♦ Canon 70D, 50mm lens, ISO 400, f9.0, 1/400

Generations



Generations

